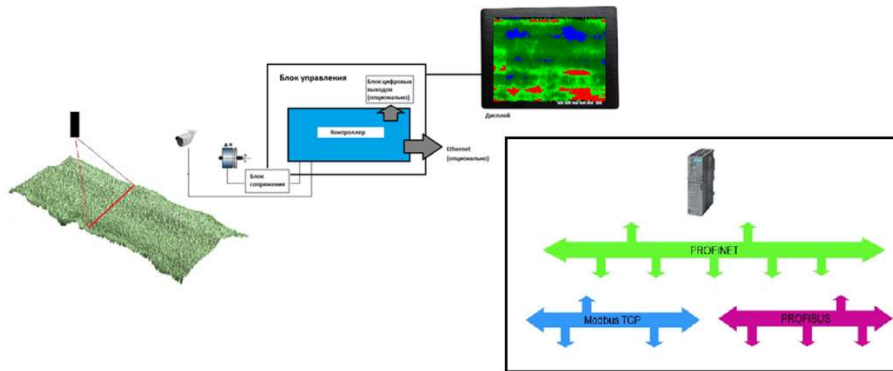


SURFACE SCANNER



Purpose

The scanner of the chipboard forming machine is the ideal solution to the problem of uneven filling, which leads to thickness variation, different density of the finished plate and, as a result, to a decrease in the quality of the finished product. The scanner allows you to monitor and analyze the height and irregularities of the carpet (hillocks and pits) in real time, which allows operators to take timely measures to eliminate the production of poor-quality products. Thus, the scanner is a tool for intermediate control of the manufactured plate, allowing you to achieve high quality, reduce production costs and waste losses.

Main functions

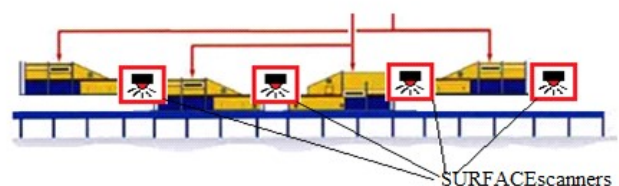
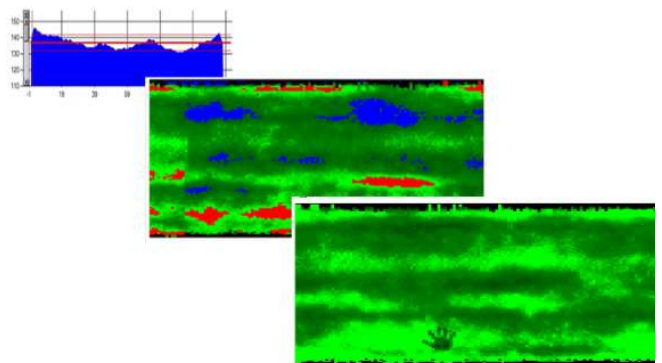
- Scanning the surface, after the forming machine.
- Flexible adjustment of adjustable parameters for each layer thickness.
- Visual representation of scan results.
- Transmission of control signals to the process control system.
- Save scan results to the database.

Scanner specification

- Control block
- Scanner module
- Distance sensor
- Motion sensor interface unit with controller
- Industrial panel monitor
- Operator's PC + panel monitor (optional)
- Communication with process control system (Profinet, Profibus, Modbus) (optional)
- Block of digital outputs for generating external binary signals (optional)

Basic technical data

- | | |
|-------------------------------|--------------------|
| • Thickness measurement range | 0 ... 180 (400) mm |
| • Measurement accuracy | ± 1 mm |
| • Scan frequency | 30 Hz |
| • Supply voltage | ~ 220 V, 50 Hz |
| • Temperature | 0 ... + 45 C |



GRANTEEZ

Russia, Kostroma

tel. +7(920)399-93-61, E-mail: office@granteez.com, www.granteez.com